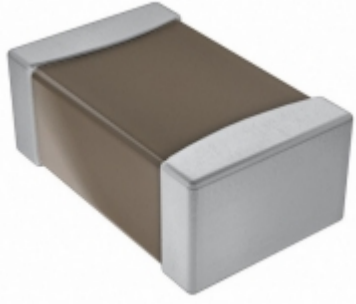


## GC332DD72E154KX01L



INNOVATOR IN ELECTRONICS

**Part Number:** [GC332DD72E154KX01L](#)

**Manufacturer:** [Murata Electronics](#)

**Description:** CAP CER 0.15UF 250V X7T 1210

**Data sheet:** [PDF Chip Monolithic Cap. Part Numbering](#)  
[PDF GC332DD72E154KX01x Spec](#)  
[PDF Chip Monolithic Automotive Catalog](#)

**RoHS Status:** Lead free / RoHS Compliant

**Ship From:** Hong Kong

**Shipment Way:** DHL/Fedex/TNT/UPS/EMS

Images are for reference only.  
See Product Specifications for product details.  
Buy GC332DD72E154KX01L with confidence from Components-Store.com, 1 Year Warranty

[Request For Quotation](#)

### PRODUCT PARAMETER

|                                  |   |
|----------------------------------|---|
| Part Number                      | <a href="#">GC332DD72E154KX01L</a>                        |
| Manufacturer                     | <a href="#">Murata Electronics</a>                        |
| Description                      | CAP CER 0.15UF 250V X7T 1210                              |
| Lead Free Status / RoHS Status   | Lead free / RoHS Compliant                                |
| Quantity Available               | 122903 pcs  |
| Product Photo                    | <a href="#">GC332DD72E154KX01L.jpg</a>                    |
| Category                         | <a href="#">Capacitors</a>                                |
| Voltage - Rated                  | 250V  |
| Tolerance                        | ±10%  |
| Thickness (Max)                  | 0.079" (2.00mm)   |
| Temperature Coefficient          | X7T   |
| Size / Dimension                 | 0.126" L x 0.098" W (3.20mm x 2.50mm)                     |
| Series                           | GC3   |
| Ratings                          | AEC-Q200  |
| Packaging                        | Cut Tape (CT)   |
| Package / Case                   | 1210 (3225 Metric)  |
| Other Names                      | 490-13999-1   |
| Operating Temperature            | -55°C ~ 125°C   |
| Mounting Type                    | Surface Mount, MLCC                                       |
| Moisture Sensitivity Level (MSL) | 1 (Unlimited)   |
| Lead Style                       | -   |
| Lead Spacing                     | -   |
| Lead Free Status / RoHS Status   | Lead free / RoHS Compliant                                |
| Height - Seated (Max)            | -   |
| Features                         | -   |
| Detailed Description             | 0.15µF ±10% 250V Ceramic Capacitor X7T 1210 (3225 Metric) |
| Capacitance                      | 0.15µF  |
| Applications                     | Automotive  |

Components-Store.com is a Reliable Stocking Distributor of Electronic Components. We specialize in all Murata Electronics series electronic components. We have 122903 pieces of Murata Electronics GC332DD72E154KX01L in stock available now. Request a quote from electronics components distributor at Components-Store.com, our sales team will contact you within 24 hours.  
RFQ Email: [info@Components-Store.com](mailto:info@Components-Store.com)

### RELATED PRODUCTS

|  |   |   |                     |
|--|---|---|---------------------|
|  | Part#: <a href="#">GC343QD72E224KX01L</a><br>Description: CAP CER 0.22UF 250V X7T 1812  | Manufacturers: <a href="#">Murata Electronics</a><br>In Stock: 196800 | <a href="#">RFQ</a> |
|  | Part#: <a href="#">GC331AD72E333KX01D</a><br>Description: CAP CER 0.033UF 250V X7T 1206 | Manufacturers: <a href="#">Murata Electronics</a><br>In Stock: 412685 | <a href="#">RFQ</a> |
|  | Part#: <a href="#">GC331CD72J153KX03L</a><br>Description: CAP CER 0.015UF 630V X7T 1206 | Manufacturers: <a href="#">Murata Electronics</a><br>In Stock: 393386 | <a href="#">RFQ</a> |
|  | Part#: <a href="#">GC331AD72W103KX01D</a><br>Description: CAP CER 10000PF 450V X7T 1206 | Manufacturers: <a href="#">Murata Electronics</a><br>In Stock: 706764 | <a href="#">RFQ</a> |
|  | Part#: <a href="#">GC331CD72E683KX03L</a><br>Description: CAP CER 0.068UF 250V X7T 1206 | Manufacturers: <a href="#">Murata Electronics</a><br>In Stock: 244304 | <a href="#">RFQ</a> |
|  | Part#: <a href="#">GC343DD72W154KX01L</a><br>Description: CAP CER 0.15UF 450V X7T 1812  | Manufacturers: <a href="#">Murata Electronics</a><br>In Stock: 110875 | <a href="#">RFQ</a> |
|  | Part#: <a href="#">GC331CD72W473KX03L</a><br>Description: CAP CER 0.047UF 450V X7T 1206 | Manufacturers: <a href="#">Murata Electronics</a><br>In Stock: 441980 | <a href="#">RFQ</a> |
|  | Part#: <a href="#">GC331BD72W333KX01L</a><br>Description: CAP CER 0.033UF 450V X7T 1206 | Manufacturers: <a href="#">Murata Electronics</a><br>In Stock: 488829 | <a href="#">RFQ</a> |
|  | Part#: <a href="#">GC332QD72E104KX01L</a><br>Description: CAP CER 0.1UF 250V X7T 1210   | Manufacturers: <a href="#">Murata Electronics</a><br>In Stock: 254834 | <a href="#">RFQ</a> |
|  | Part#: <a href="#">GC331BD72J103KX01L</a><br>Description: CAP CER 10000PF 630V X7T 1206 | Manufacturers: <a href="#">Murata Electronics</a><br>In Stock: 519609 | <a href="#">RFQ</a> |
|  | Part#: <a href="#">GC332DD72W104KX01L</a><br>Description: CAP CER 0.1UF 450V X7T 1210   | Manufacturers: <a href="#">Murata Electronics</a><br>In Stock: 147447 | <a href="#">RFQ</a> |
|  | Part#: <a href="#">GC331AD72W153KX01D</a><br>Description: CAP CER 0.015UF 450V X7T 1206 | Manufacturers: <a href="#">Murata Electronics</a><br>In Stock: 676434 | <a href="#">RFQ</a> |
|  | Part#: <a href="#">GC331BD72E473KX01L</a><br>Description: CAP CER 0.047UF 250V X7T 1206 | Manufacturers: <a href="#">Murata Electronics</a><br>In Stock: 372587 | <a href="#">RFQ</a> |
|  | Part#: <a href="#">GC343DD72E334KX01L</a><br>Description: CAP CER 0.33UF 250V X7T 1812  | Manufacturers: <a href="#">Murata Electronics</a><br>In Stock: 71996  | <a href="#">RFQ</a> |
|  | Part#: <a href="#">GC331BD72W223KX01L</a><br>Description: CAP CER 0.022UF 450V X7T 1206 | Manufacturers: <a href="#">Murata Electronics</a><br>In Stock: 532848 | <a href="#">RFQ</a> |
|  | Part#: <a href="#">GC343DD72J683KX01L</a><br>Description: CAP CER 0.068UF 630V X7T 1812 | Manufacturers: <a href="#">Murata Electronics</a><br>In Stock: 124638 | <a href="#">RFQ</a> |
|  | Part#: <a href="#">GC332QD72J223KX01L</a><br>Description: CAP CER 0.022UF 630V X7T 1210 | Manufacturers: <a href="#">Murata Electronics</a><br>In Stock: 255647 | <a href="#">RFQ</a> |
|  | Part#: <a href="#">GC332DD72J473KX01L</a><br>Description: CAP CER 0.047UF 630V X7T 1210 | Manufacturers: <a href="#">Murata Electronics</a><br>In Stock: 135787 | <a href="#">RFQ</a> |
|  | Part#: <a href="#">GC332DD72J333KX01L</a><br>Description: CAP CER 0.033UF 630V X7T 1210 | Manufacturers: <a href="#">Murata Electronics</a><br>In Stock: 217662 | <a href="#">RFQ</a> |
|  | Part#: <a href="#">GC332DD72W683KX01L</a><br>Description: CAP CER 0.068UF 450V X7T 1210 | Manufacturers: <a href="#">Murata Electronics</a><br>In Stock: 157122 | <a href="#">RFQ</a> |

### Related keywords for GC332DD72E154KX01L

|                                       |                                |                                  |                                  |
|---------------------------------------|--------------------------------|----------------------------------|----------------------------------|
| Murata Electronics GC332DD72E154KX01L | GC332DD72E154KX01L distributor | GC332DD72E154KX01L supplier      | GC332DD72E154KX01L price         |
| GC332DD72E154KX01L download datasheet | GC332DD72E154KX01L datasheet   | GC332DD72E154KX01L stock         | buy GC332DD72E154KX01L           |
| Murata Electronics GC332DD72E154KX01L | MURATA GC332DD72E154KX01L      | Murata Electronics North America | TOKO / Murata GC332DD72E154KX01L |

GC332DD72E154KX01L

